



Science  
Accueil  
Move easier!



# VIVRE LE FRANÇAIS

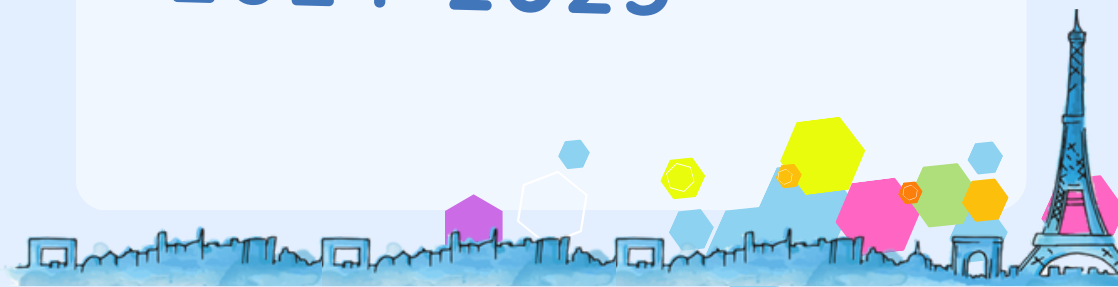


Live, Love & Learn

Learning the Molière's language is not that hard! Our recipe? Welcoming you in a friendly setting, in small groups that maximize speaking time and provide fast learning success, qualified and experienced teachers, practice both in the classroom and in real life situations, celebrate the French language...

**FRENCH AS FOREIGN  
LANGUAGE COURSES**

**2024-2025**



# OUR FORMULAS

Science Accueil offers 4 options  
to fit all profiles:

## 1 Semester formula

Regular classes twice a week over a semester, for repeated and lasting learning. These courses focus on the written language and encourage oral practice thanks to small groups and immersion courses. Free access to few "Apéro-FLE" evenings to all participants. See following pages.

## 2 Summer courses

Would you like to make rapid progress in French over a short period of time? Semi-intensive summer courses are organized in July/August/September to prepare you for the new academic year. We offer between 8 and 10 hours of lessons per week with a qualified teacher who will adapt the program to the level of the group and your specific needs. You will receive a certificate of attendance at the end of the session.

## 3 Customized courses

Do you have a specific request? Are you a company wishing to offer courses within your structure? Our tailor made courses are adapted to your needs and objectives: group size, frequency, location, learning goals... everything's possible!  
For more information on prices and terms, please contact us.

## 4 New for 2024-2025!

**Professional French courses:** to improve your French in a professional environment, sign up for our courses for 1, 2 or 3 sessions of your choice! Package or customized registration. For more information, please contact us.

NEW



# → SEMESTER FORMULAS

## THE HEART OF OUR PROJECT

A friendly and relaxed atmosphere

Long-term learning: a whole semester, 60h

Small classes: 8-10 students

Focus on oral communication

Classroom courses and immersion courses

Homework assignments

## COURSE'S CONTENT



### Classroom/in-class and immersion sessions

Current affairs, daily life topics, discovery of the French culture, situational and immersion exercises (in shops, cafes, monuments, exhibitions...).



### FLE's party

An award ceremony at the end of every semester: shows, presentations, graduation ceremony, cocktail party.



### Apéro-FLE

In addition to your course, join our informal evening gathering to improve your French through games, cine-debate of conversation classes, pronunciation, in the relaxed atmosphere of a bring&share apéro.

## LEVELS

# 5

levels are offered, based on the CEFR (Common European Framework of Reference for Languages) from beginner to advanced, subject to a sufficient number of registrations per level.

Upon registration, an online placement test is offered.

# USEFUL INFORMATION



## ECTS CREDITS

Some doctoral schools give ECTS credits for our courses (ask them for information).

## TIMETABLE & DATES

Classes take place mainly between 6 and 8 pm, Monday to Thursday (except for tailor-made courses). The semesters take place from October 7, 2024 to February 6, 2025 and from March 10, 2025 to July 3, 2025.

## COURSES LOCATION

Semester courses are offered in different locations in Yvelines (Versailles) and Essonne (Gif-sur-Yvette, Bures-sur-Yvette, Massy, Palaiseau, Evry...), and online.

Customized courses can be organized on site at the request of establishments in the South/west of the Ile-de-France region and Paris.

## COURSES RATES

### Semester formula

60-hour session (2x2h) / over 15 to 18 weeks.

Not included: exceptional costs for certain immersion courses (café, restaurant, museum, etc.).

**Fees : 498€ TTC including VAT**

Fees participation in installments is possible

## REGISTRATION

To register, fill in the form at [www.science-accueil.org](http://www.science-accueil.org), by clicking on the tab "Learning French" (or scan the QR code).

## INFORMATION

\*For more information on semester and summer courses,  
or for a tailor-made course:

[www.science-accueil.org](http://www.science-accueil.org) "Learn French" section

Contact: [fle@science-accueil.org](mailto:fle@science-accueil.org)

Tel.: +33 (0)1 70 26 41 40

